



# INTERVENTIONAL RADIOLOGY



Canadian Interventional Radiology Association

.....  
Association canadienne de radiologie d'intervention

# COMMON PRINCIPLES

- WE USE DYE – WHERE IS IT GOING?
  - IN THE BLOOD VESSEL – NEED TO KNOW CREATININE CLEARANCE
    - IF  $> 60$  NO PROBLEMS
    - IF 30-60 GENERALLY NO PROBLEMS – GIVE FLUIDS FOR INPATIENTS, CHICKEN SOUP AND LOTS OF WATER FOR OUTPATIENTS
    - IF  $< 30$  REQUIRE NEPHROLOGY CONSULT
  - ANYWHERE ELSE – CREATININE NOT IMPORTANT

# COMMON PRINCIPLES

- WE STICK THINGS INTO PEOPLE
  - CBC/COAGS FOR ALL!
  - CBC
    - PLATELETS > 50 NOT A PROBLEM
    - PLATELETS 30-50 MAY BE A PROBLEM
    - PLATELETS < 30 A PROBLEM
      - PLATELETS IN A PINCH
  - INR
    - PROCEDURE DEPENDENT
    - FOR ELECTIVE PROCEDURES
      - 1.5 IS OK, 1.6 IS NOT
    - IF THE INR CANNOT BE CORRECTED THEN RISK/BENEFIT MUST BE CONSIDERED
      - FFP IN A PINCH



# Biopsy/drainage

NOT JUST LUNGS, LIVERS AND KIDNEYS!

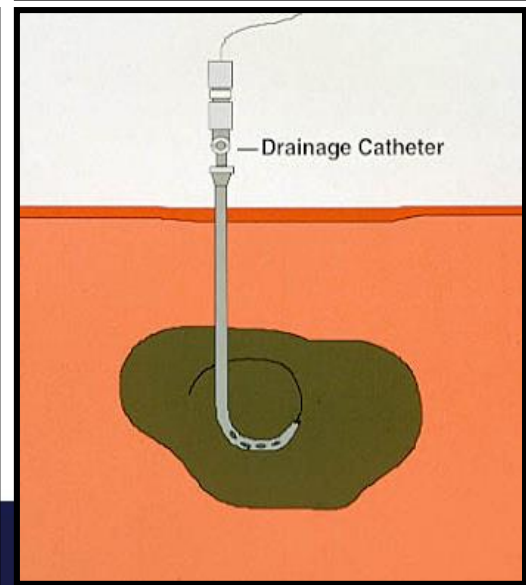
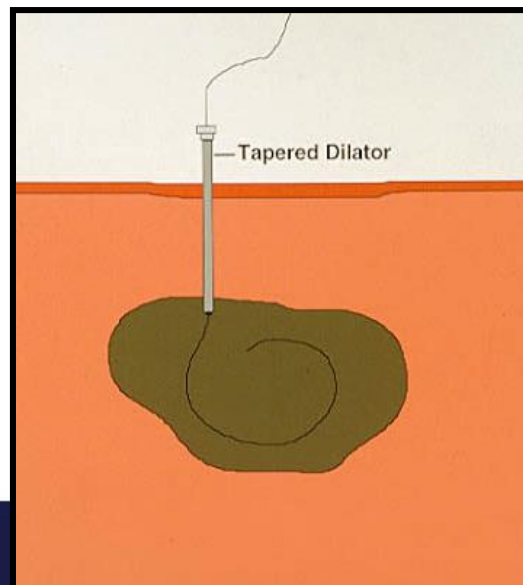
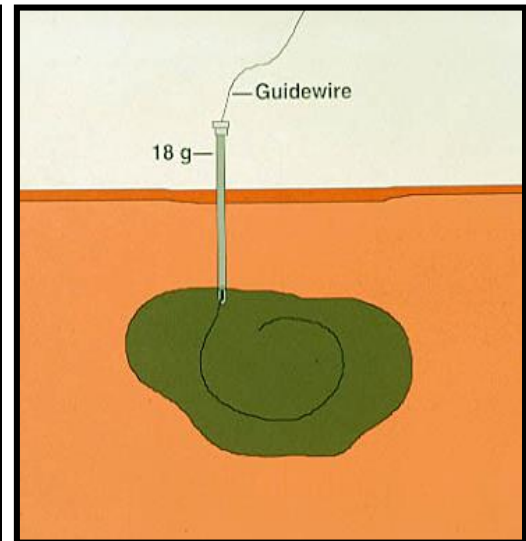
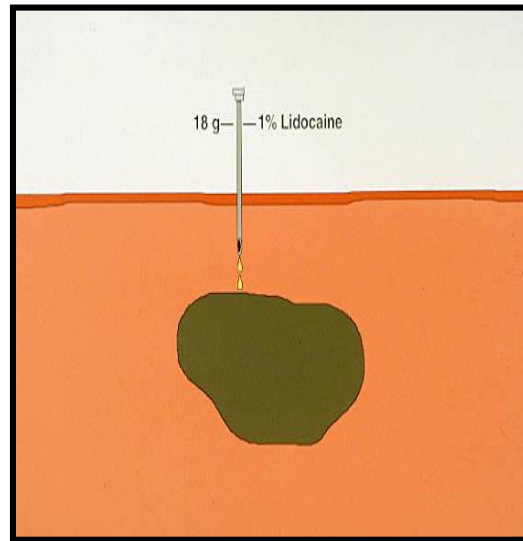


Canadian Interventional Radiology Association

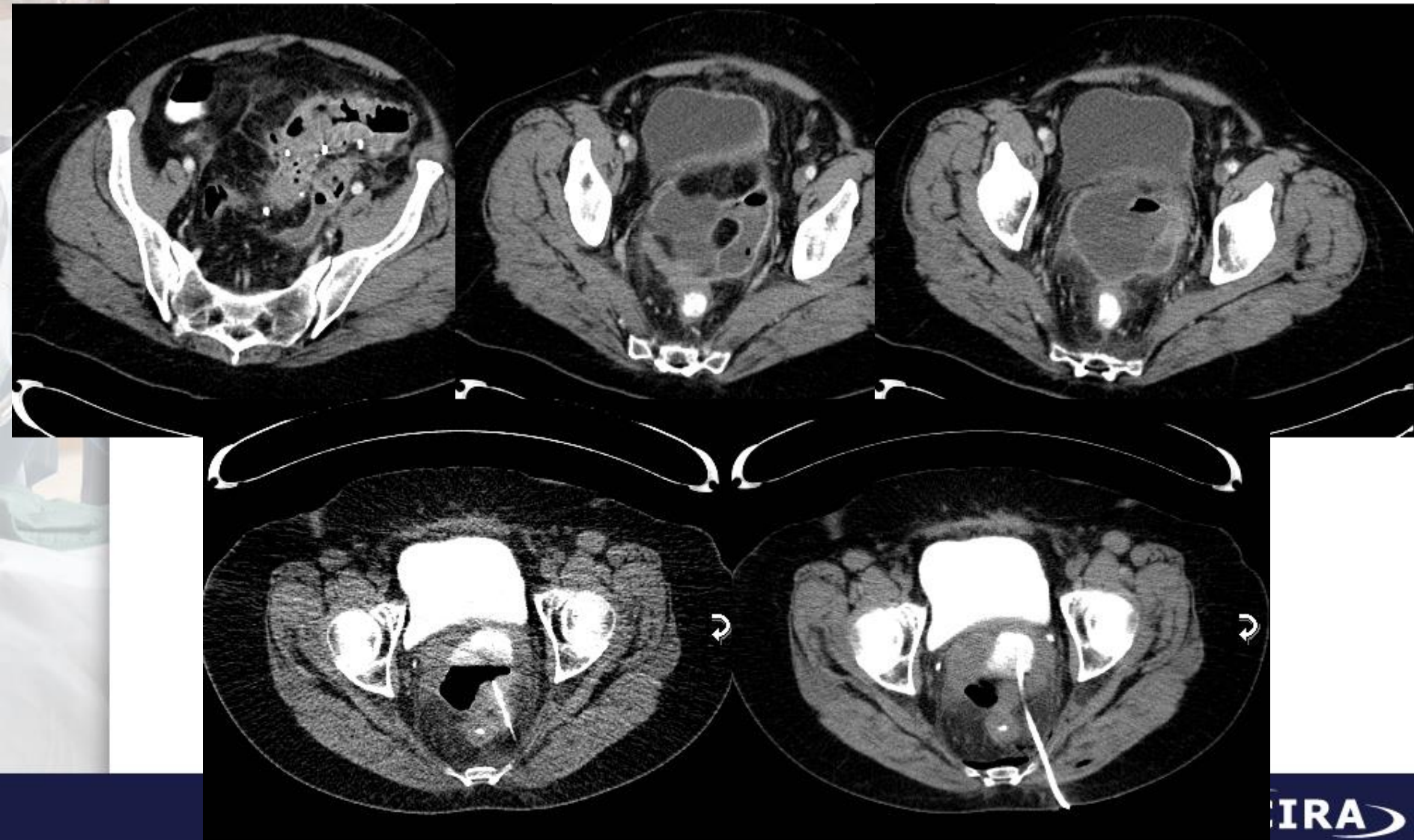
.....  
Association canadienne de radiologie d'intervention

# Bread and Butter

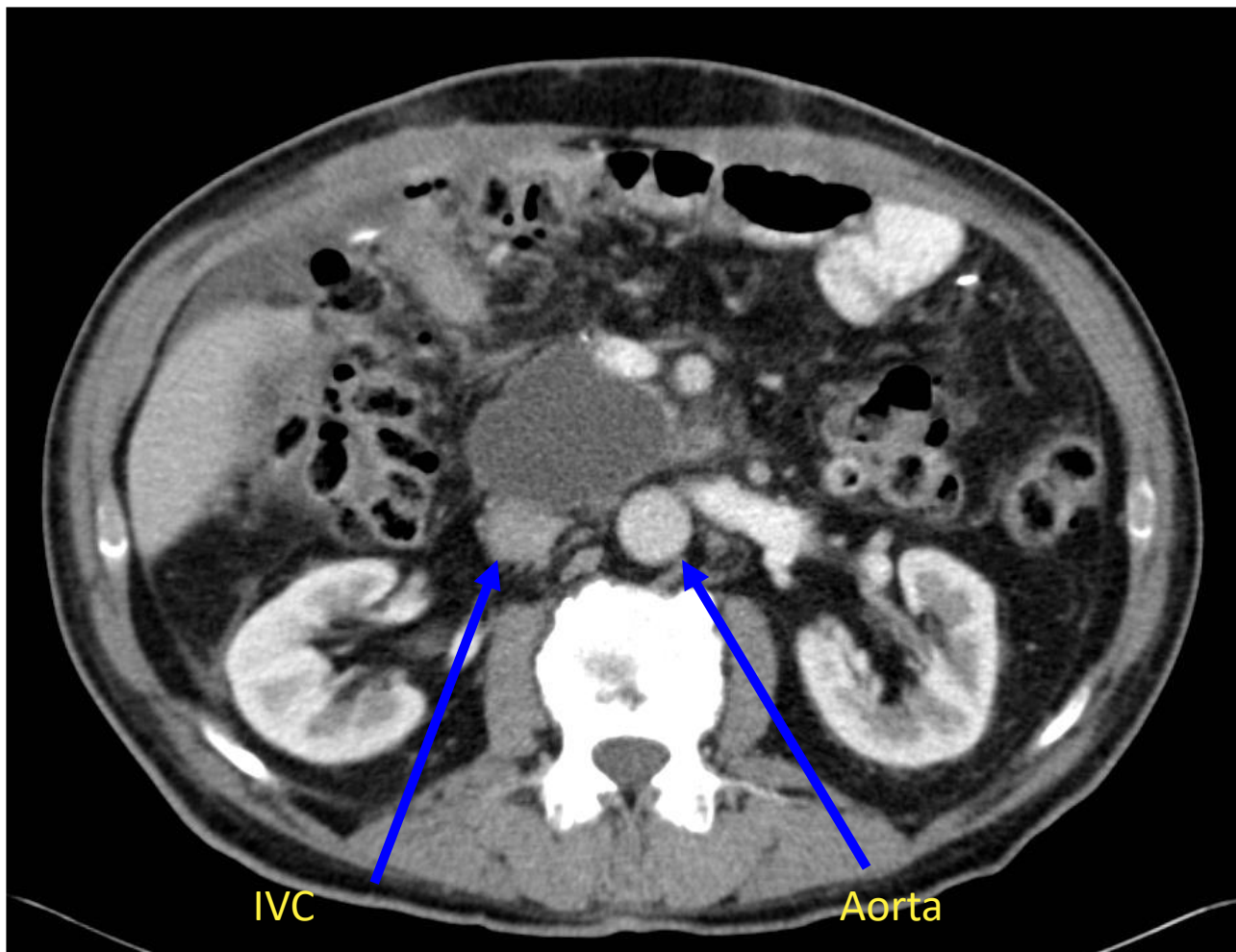
- Biopsies
- Drainage



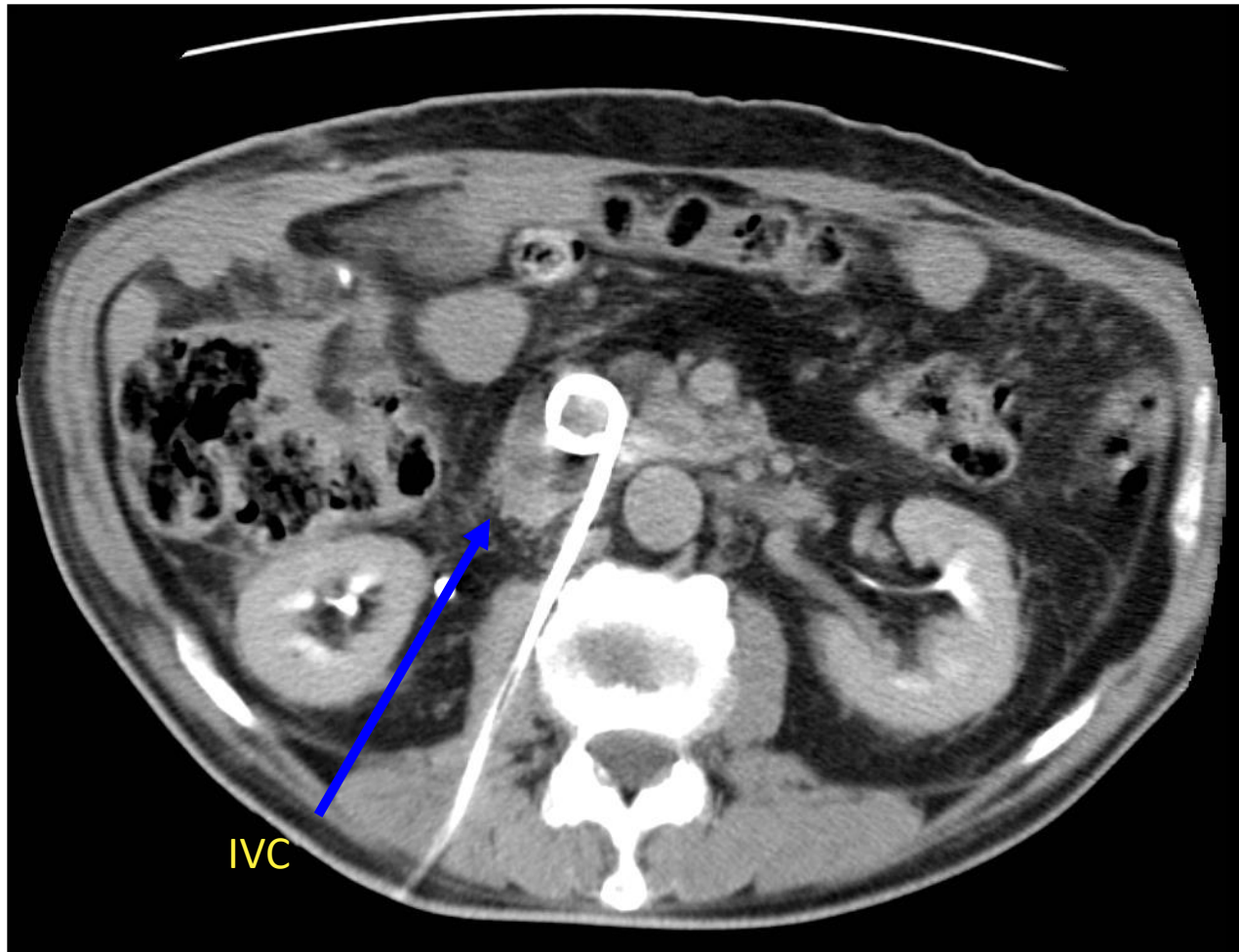
# Diverticular abscess



# Deep Abscess

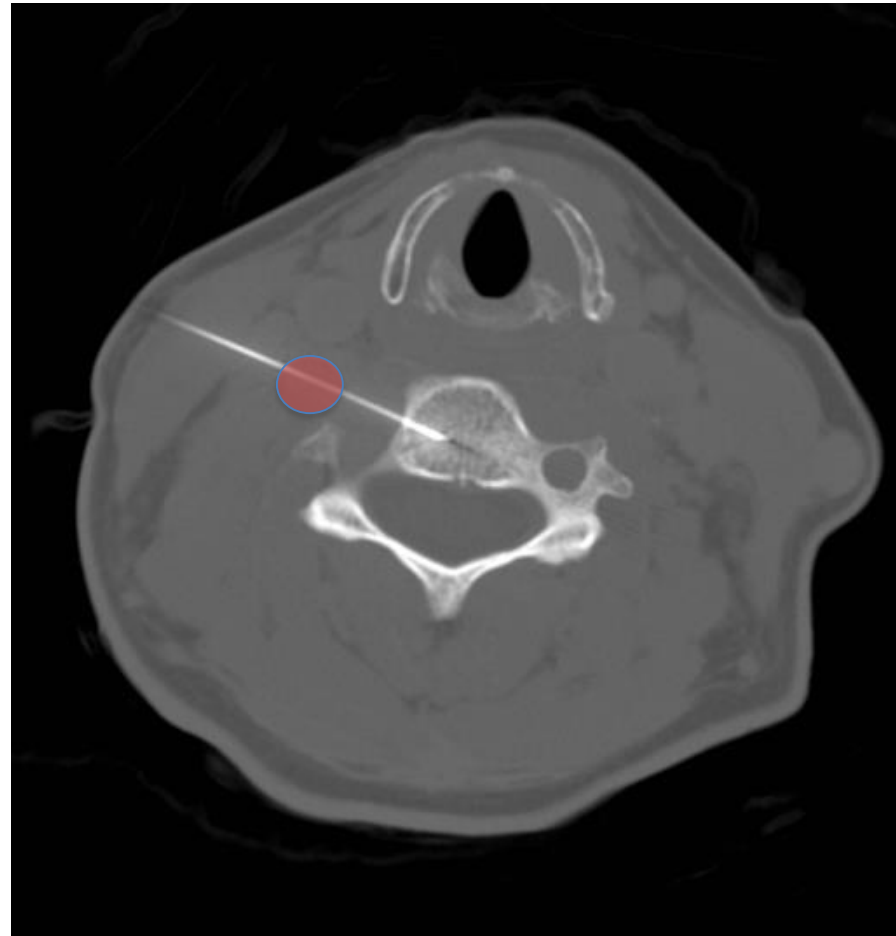


# Deep Abscess





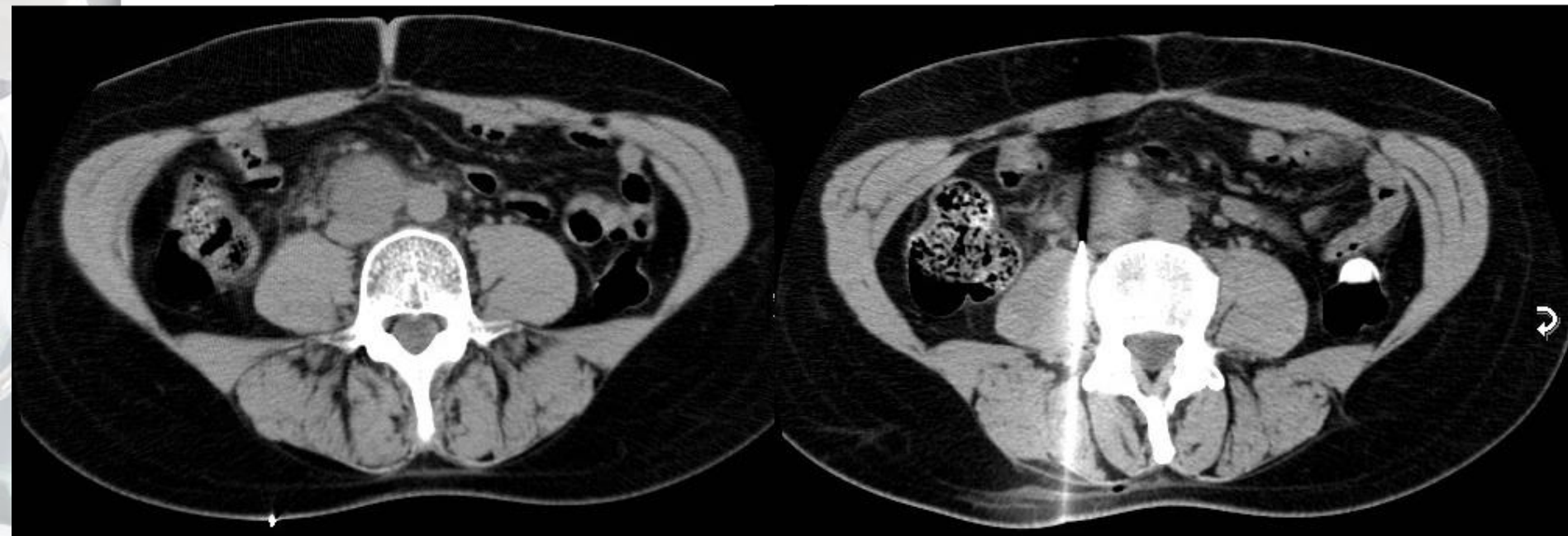
# C spine Bx



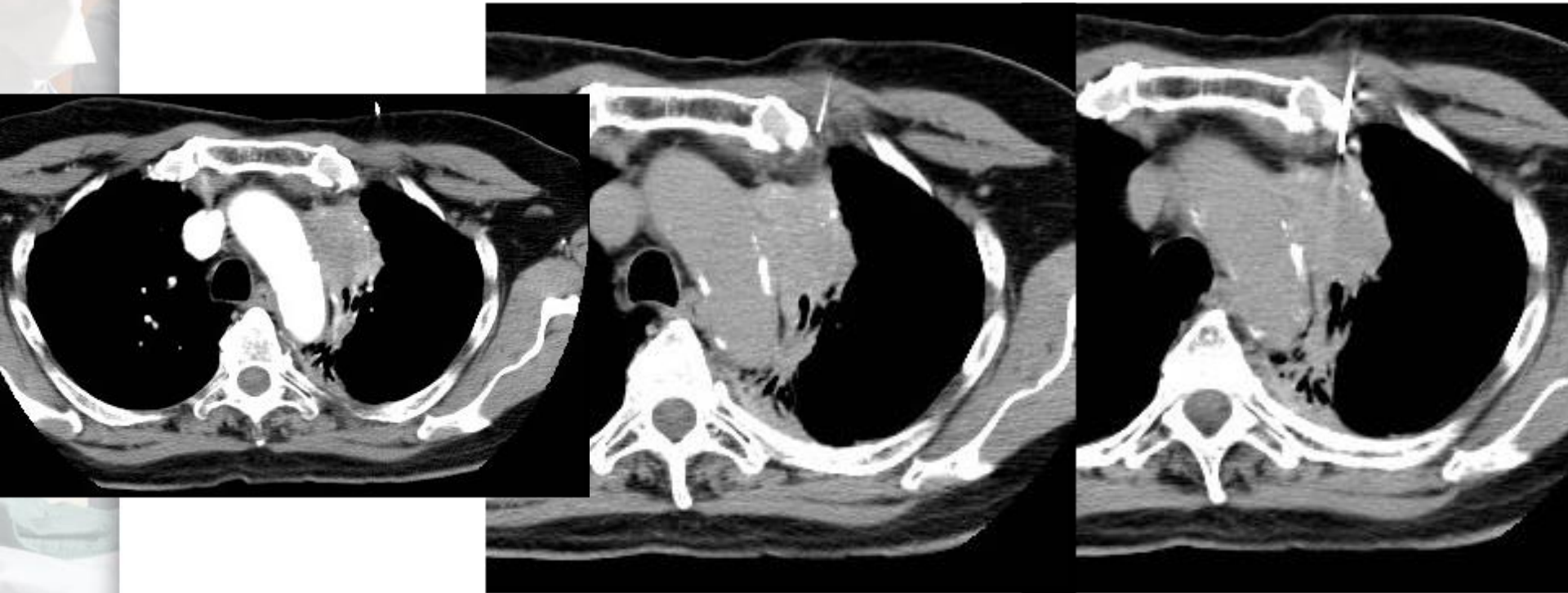
# Deep Abdo Mass



# Deep Abdo Mass



# Mediastinal Biopsy



For more information please contact



**Canadian Interventional Radiology Association**



**Association canadienne de radiologie d'intervention**

[www.ciraweb.org](http://www.ciraweb.org)

[info@ciraweb.org](mailto:info@ciraweb.org)

### ACKNOWLEDGMENTS:

Dr. Robert Cook (Western Memorial Regional Hospital)  
for providing this presentation